

West Kintyre – Port Ellen Cable Route Survey

XOCEAN Notice to Mariners

Date of Issue: 13th June 2025

Survey Activities: XOCEAN is planning the collection of geophysical data using remotely piloted Uncrewed Surface Vessels (USVs) along a proposed cable route corridor from Isle of Islay to West Kintyre. The USVs are expected to operate out of Lagavulin bay for the full length of survey. A mix of USVs that use both hull mounted survey sensors (Multibeam Echosounders & Sub-Bottom Profilers) and also towed sensors (SideScan Sonar & Magnetometer) through the water in proximity of the seabed will be used. A crewed Support Vessel will be chartered throughout the survey to support the USVs with departures and arrivals from the port and assist in towing them back in if a technical issue occurs.

Dates/Duration: Operations are expected to commence around 1st July 2025. It is expected that the survey activities shall be completed within 3-4 weeks (subject to weather).

Survey Area: Figure 1 below indicates the operational area which is shown by the red boundary. This is outlined in Table 1 below also.

Figure 1: Survey corridor and overall working area

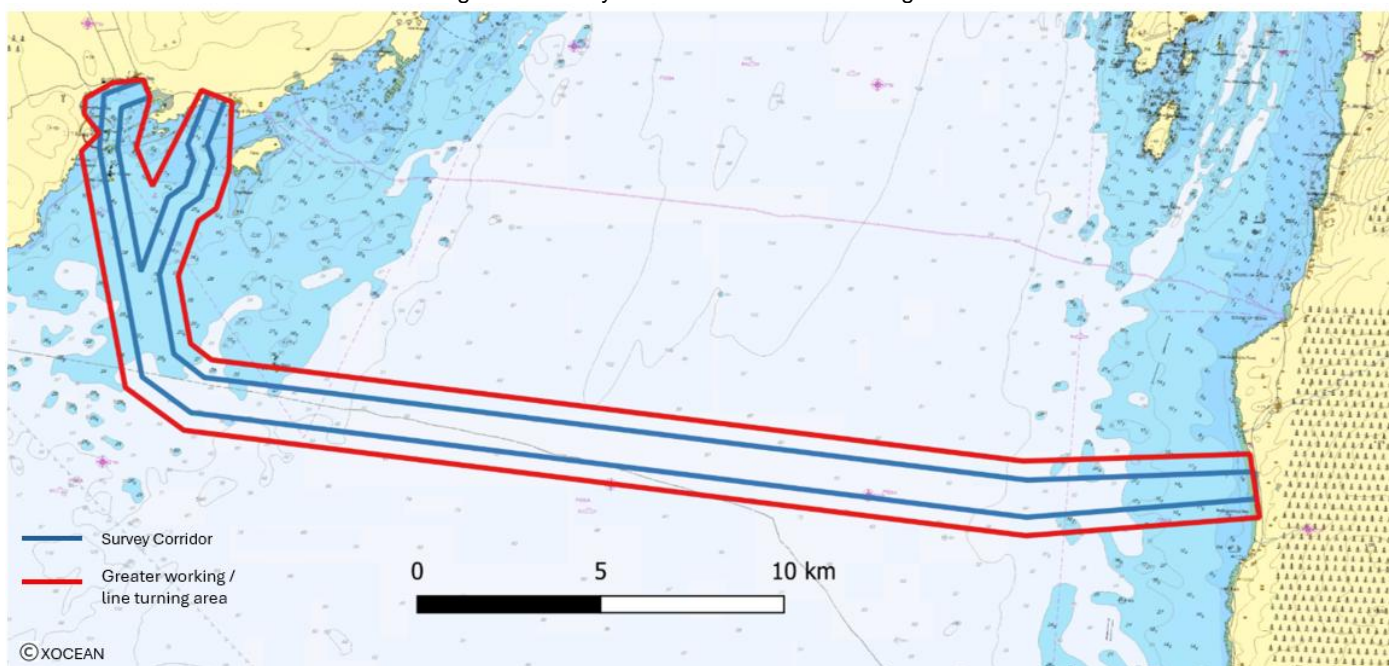


Table 1: Operational area coordinates (WGS84)

Degrees		Degree Minutes	
Lat	Long	Lat	Long
55.634° N	6.193° W	55° 38.030' N	6° 11.558' W
55.633° N	6.206° W	55° 37.966' N	6° 12.360' W
55.629° N	6.217° W	55° 37.724' N	6° 13.046' W
55.625° N	6.218° W	55° 37.492' N	6° 13.058' W
55.620° N	6.211° W	55° 37.222' N	6° 12.632' W
55.616° N	6.218° W	55° 36.939' N	6° 13.091' W
55.559° N	6.194° W	55° 33.514' N	6° 11.663' W
55.549° N	6.168° W	55° 32.926' N	6° 10.100' W
55.532° N	5.803° W	55° 31.913' N	5° 48.167' W

NOTICE TO MARINERS



Commercial in Confidence

55.539° N	5.702° W	55° 32.316' N	5° 42.142' W
55.554° N	5.708° W	55° 33.241' N	5° 42.456' W
55.550° N	5.805° W	55° 33.005' N	5° 48.314' W
55.566° N	6.158° W	55° 33.976' N	6° 9.465' W
55.570° N	6.167° W	55° 34.200' N	6° 10.028' W
55.586° N	6.174° W	55° 35.179' N	6° 10.425' W
55.600° N	6.166° W	55° 35.999' N	6° 9.971' W
55.603° N	6.159° W	55° 36.198' N	6° 9.517' W
55.613° N	6.154° W	55° 36.755' N	6° 9.236' W
55.629° N	6.154° W	55° 37.765' N	6° 9.236' W
55.632° N	6.167° W	55° 37.918' N	6° 10.045' W
55.608° N	6.187° W	55° 36.482' N	6° 11.200' W
55.617° N	6.194° W	55° 37.039' N	6° 11.665' W
55.630° N	6.190° W	55° 37.782' N	6° 11.373' W

The details of the Uncrewed Surface Vessels (USVs) that will operate on the survey are shown below. It is expected that up to 3 USVs with hull mounted sensors and 3 with towed sensors will be operating on the project.

Table 3: USVs with Hull Mounted Sensors

AIS Name:	X 16 UNCREWED	X 23 UNCREWED	X 27 UNCREWED
MMSI:	232039413	232044015	232053292
Callsign:	MKMB2	MMIM8	MOUE2
Length:	4.5m	4.5m	4.5m
Beam:	2.2m	2.2m	2.2m
Speed:	3.5kts	3.5kts	3.5kts
Draught:	1.5m	1.5m	1.5m
Tonnage:	1.1Tn	1.1Tn	1.1Tn

Table 4: USVs with Towed Sensors

AIS Name:	X 09 UNCREWED	X 11 UNCREWED	X 29 UNCREWED
MMSI:	232027632	232033343	232053990
Callsign:	MHIJ8	MIRG4	MOXJ4
Length:	4.5m	4.5m	4.5m
Beam:	2.2m	2.2m	2.2m
Speed:	2.5kts	2.5kts	2.5kts
Draught:	1.5m	1.5m	1.5m
Tonnage:	1.1tn	1.1Tn	1.1Tn

Situational Awareness: Although the USVs are uncrewed, they are remotely piloted throughout the 24 hour operation. The USV sends real time images and situational awareness data over satellite to allow this monitoring. The situational awareness aids available are listed below.



Figure 2: USV with hull mounted sensors



Figure 3: USV with towed sensors

Safety Precautions: The USV is equipped with the following to make it conspicuous to other marine traffic:

- AIS
- VHF
- Navigation Lights & Sound Signals
- Active Radar Reflector

Exclusion Area / Closest Point of Approach: Seafarers are kindly ask to provide a clearance of >500m from the USVs at all times when they are in operation.

Support Vessel: The USVs operations will be supported by a crewed Support Vessel, XOCEAN plan to charter in the *Wavedancer*, owned and operated by Islay Sea Adventures which either be based at Port Ellen or the Islay Sea Adventures Marine Centre on Islay.

	<i>Wavedancer</i>
MMSI:	235101271
Callsign:	2GXG9
Length:	11.5m
Beam:	4.0m
Draught:	2.2m

NOTICE TO MARINERS

Commercial in Confidence



XOCEAN Marine & Operations Contact Details:

Name & Role	Mobile Number	Email Address
USV Supervisor Fleet Shift Lead (continually rostered)	+353 1 223 9950	usv.supervisor@xocean.com
Adam Harding Project Manager	+44 7821 484975	adam.harding@xocean.com
Anthony O'Toole Marine Superintendent	+353 1 223 9957	anthony.otoole@xocean.com
Oliver Harris Head of Projects	+44 (0) 2080 982108	oliver.harris@xocean.com

Fishing Liaison Officers:

Fishing liaison for the operations will be co-ordinated by Blackhall & Powis Ltd. For any commercial fishery queries please contact the Company Fishing Liaison Officers (CFLOs):

Name	Contact Number	Email
Tommy Finn	07787 503119	tommy.finn@blackhallpowis.com

The local Fishing Industries Representative (FIR) will also be in place to liaise with the vessels and fishing operations in the survey area.

Name	Contact Number	Email
Angus (Gus) McGregor Newman	07768 340627	angusnewman@islay-sea-adventures.co.uk

Legal Notice

Please be advised that this Notice to Mariners should be treated as official notice of the nature, duration and location of the works which are scheduled to take place. During the period of this notice, we request that you plan your activities around our short-term, temporary activities.

Any failure to remove equipment or entry into the identified location in a manner that would constitute a hazard may be a breach of your duties of safe seamanship as described in the Convention on International Regulations for Preventing

Commercial in Confidence

Collisions at Sea 1972 and/or the Merchant Shipping Act 1995, and may result in removal of the relevant equipment. Failure to remove equipment or entry into the identified location in a manner that would constitute a hazard may constitute a breach of duty of care at common law, and a failure to protect submarine cables for successful seabed user co-existence under Scotland's National Marine Plan.

SHEPD shall found on this notice in the event of any damage, loss or disruption arising from failure to heed the information herein.